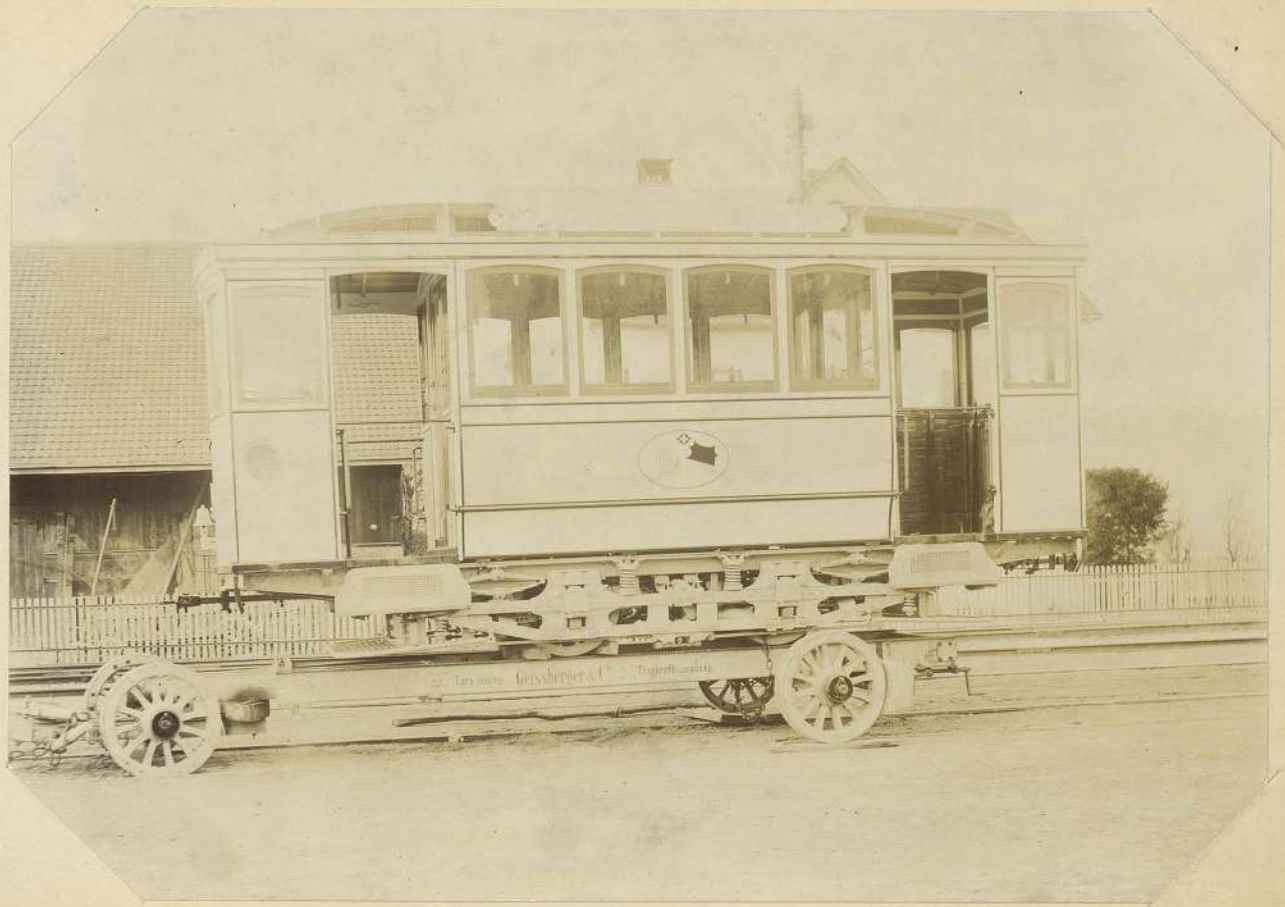


VKW

Geissberger & Cie.



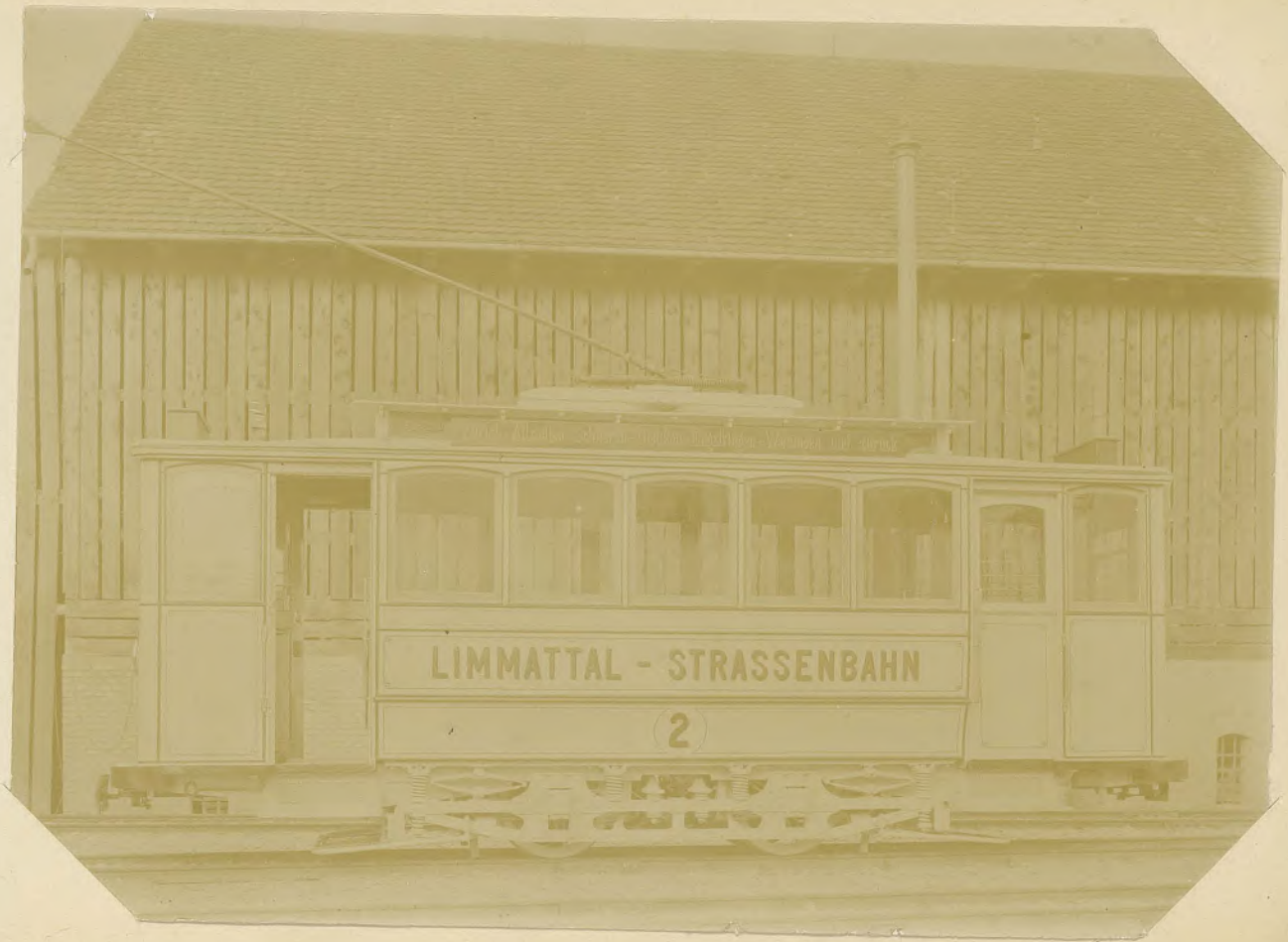


Kon. 22 - Shassu lake Timbony ?



Trammotorwägen Ce 2 1/2 80 der St. St. Z, Baujahr 1899





LIMMATTAL - STRASSENBAHN

2





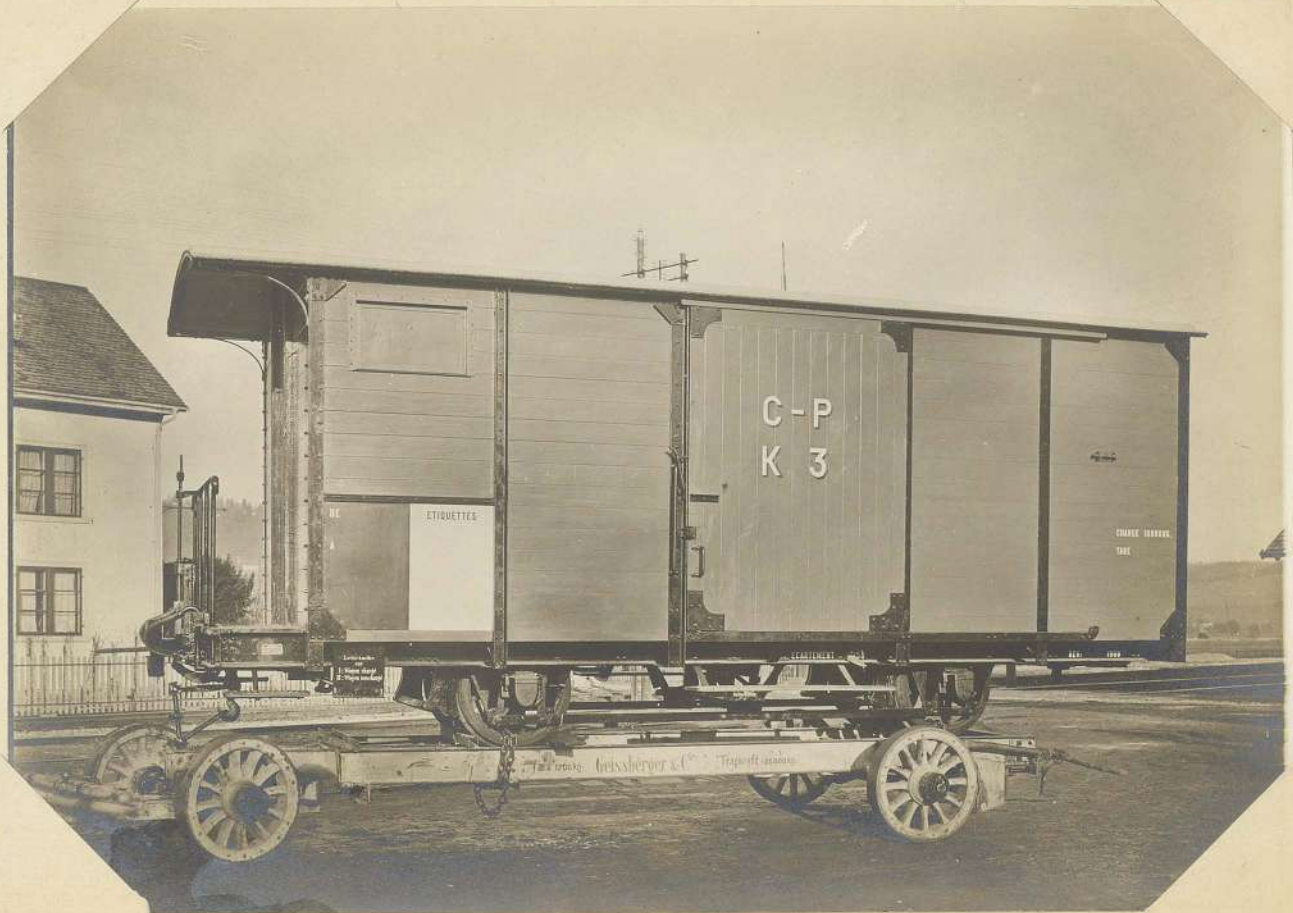




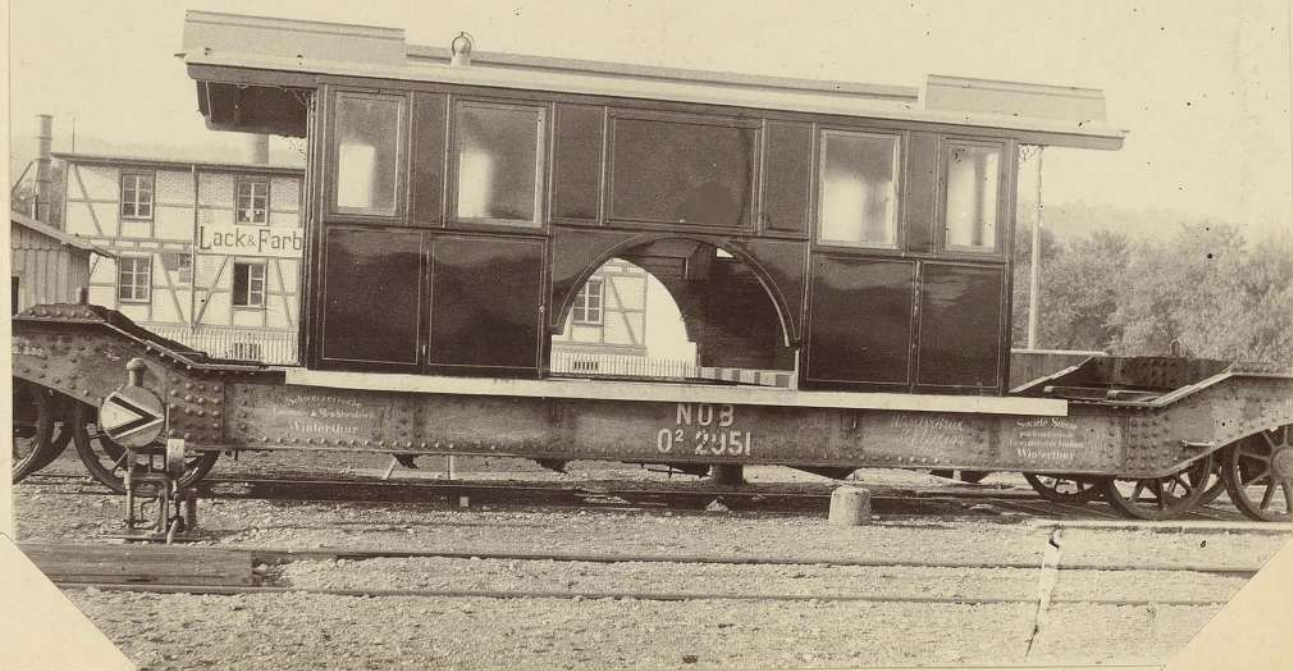




Baujahr 1899



2. Korr. 27 - Cie Electrique d'Hotel St. Denis - Palézieux, Gedächtnisfoto



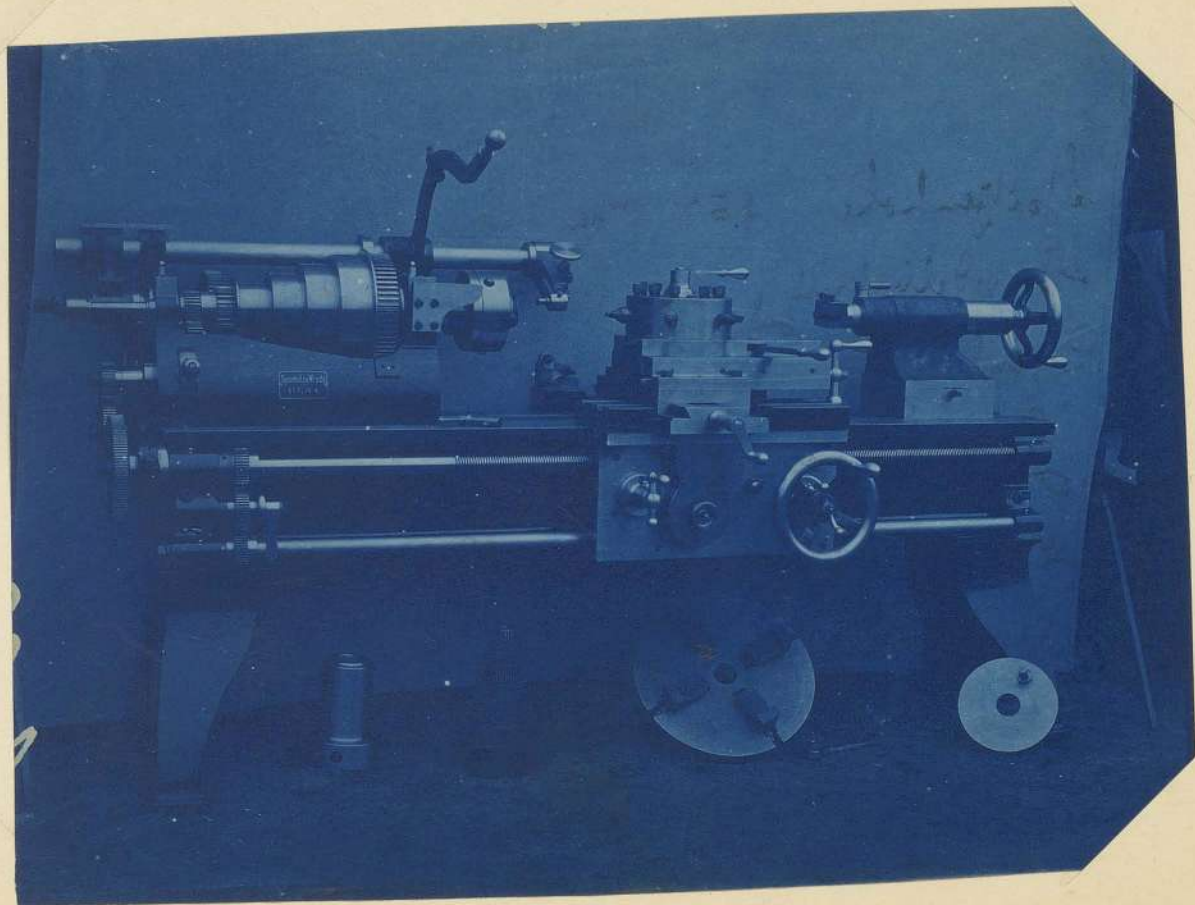
? Kom. 35-1 Stationswagen repariert für Schweiz. Nordostbahn



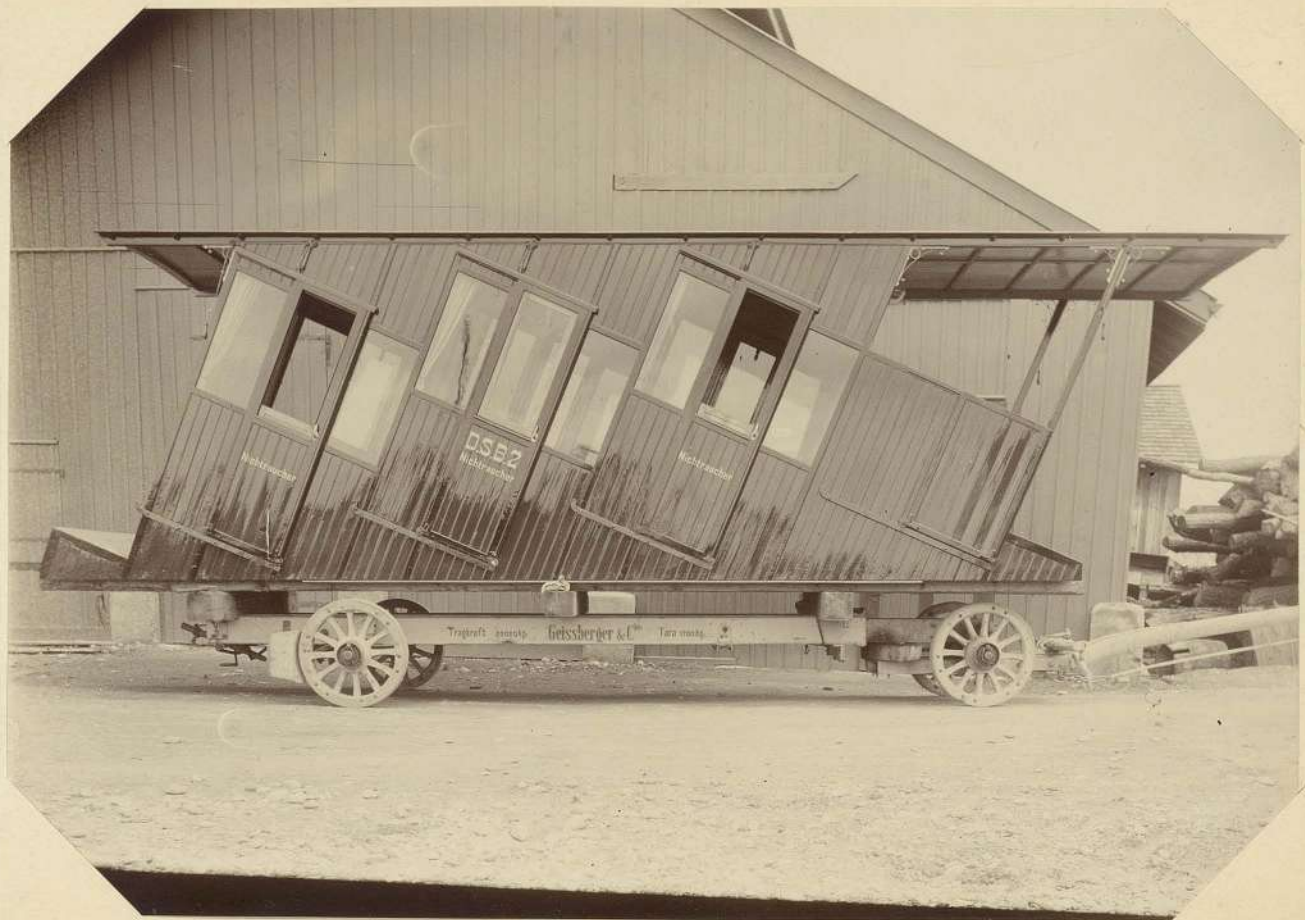
Strassenbahn

? Kom. 53 - Zug- und Floßverrichtung am Montage-Turmwagen der Limmattal-

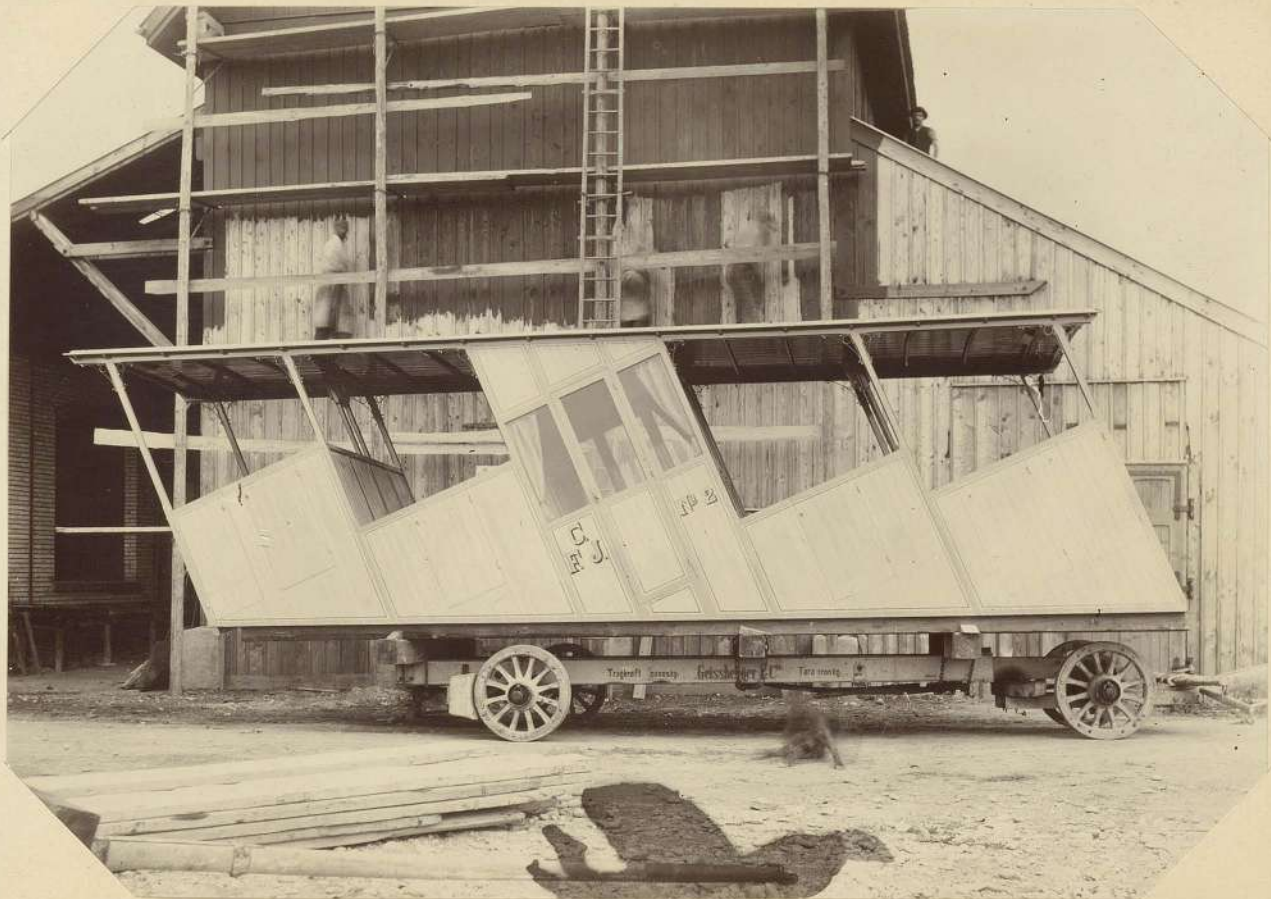






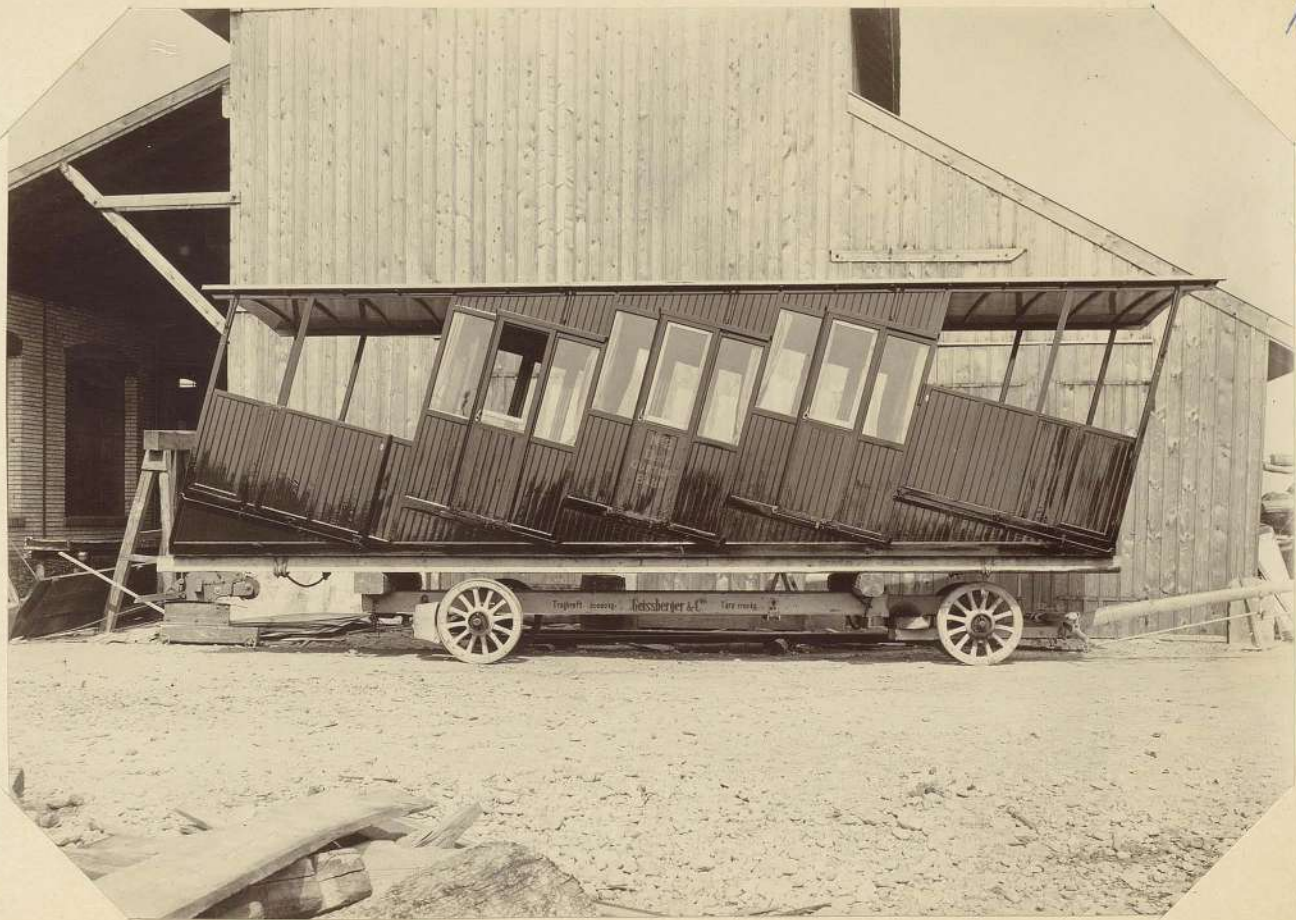


Standseilbahn Davos-Schatzalp - Kom. 21

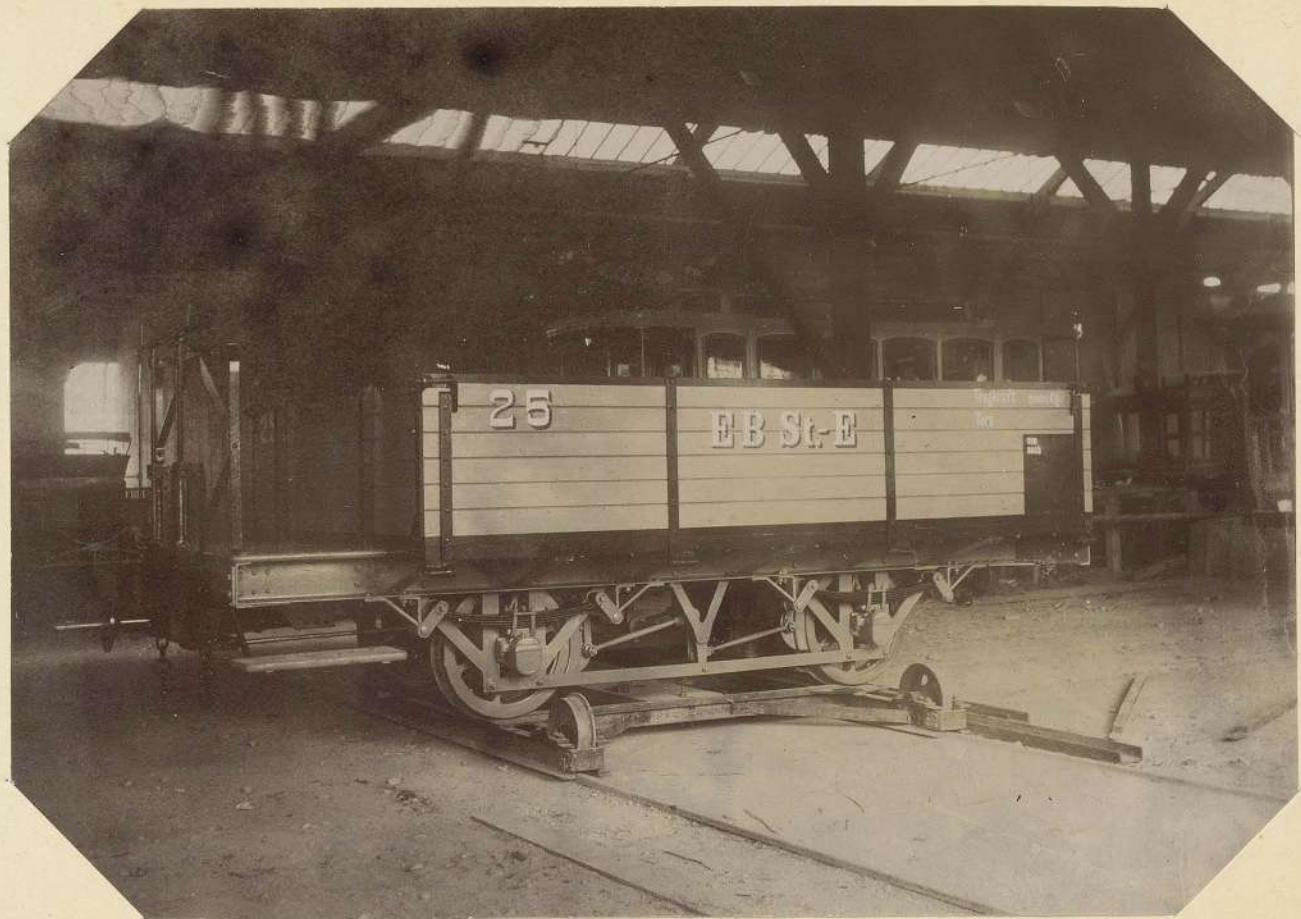


Pic du Grand Tex ?

17



Kom. 13 - Giesserei von Roll, Bern, 2 Seilbahnkästen für Gurtenbahn, bestellt 1899



2. Kom. 129, 2 offene Güteranhänger L, geliefert 15.3.1904 an Staatsstad. Engell

